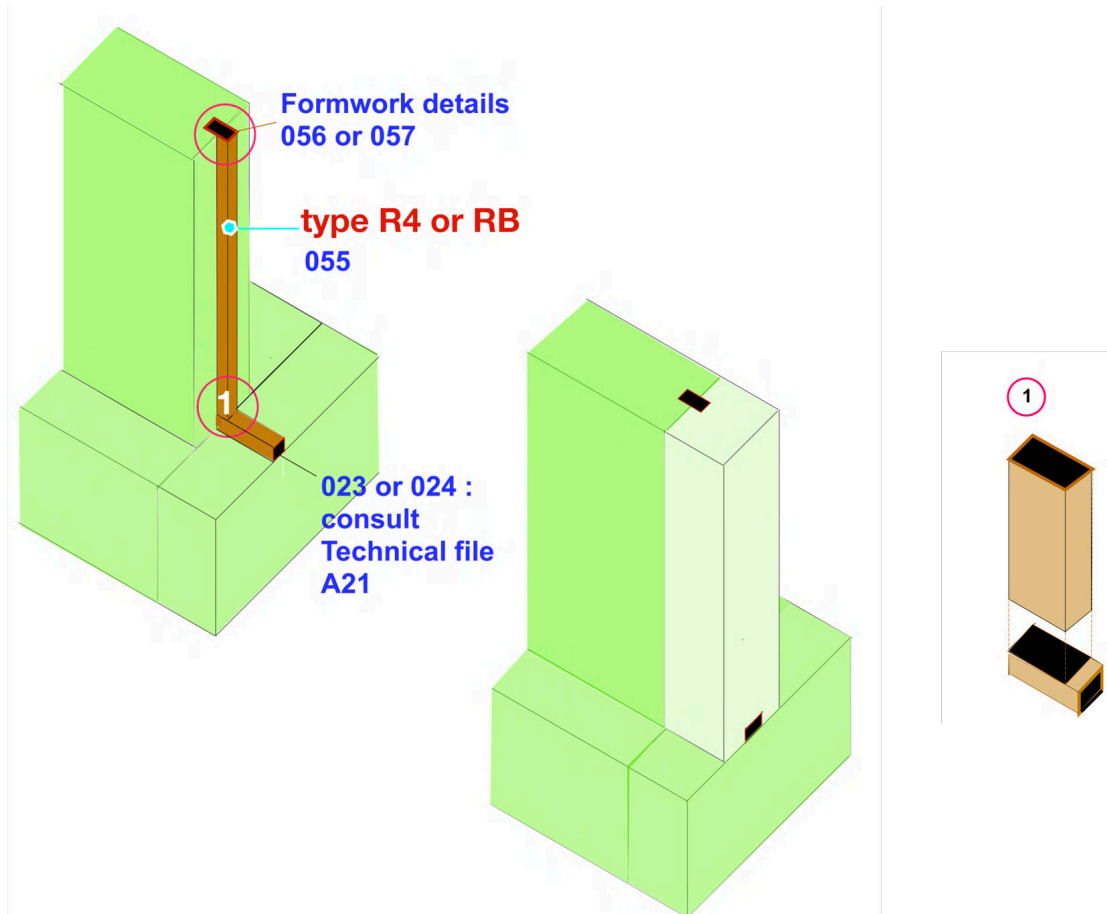


Mastix system : technical file
Waterproofing of work joints
Wall/Wall - Raft foundation/Walls
Variant with bands type R4 or RB

A23

Variant with bands type R4 or RB
Specifications sheets 055 - 056 - 057



Technical file A21 over www.mastix.ch



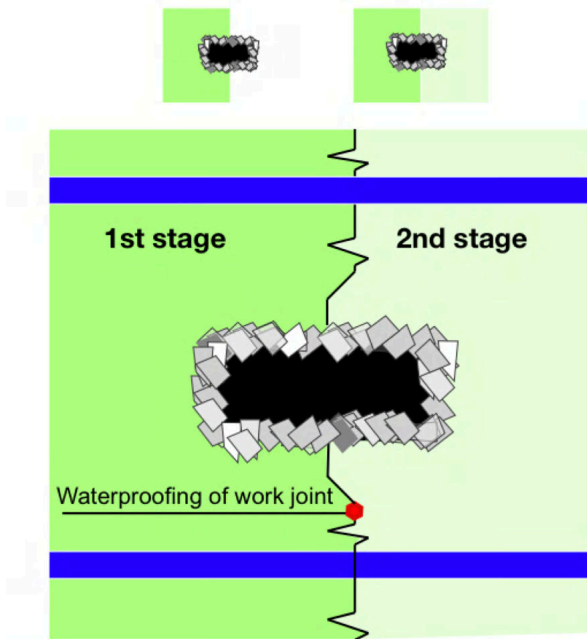
The Mastix system is simple to work with and naturally compatible with concrete and concrete structures.

© mastix sa 2018 /JM/ A23 0718 Certified ISO 9001/2015

Waterproofing of work joints

Wall/Wall

Waterstops BFL-Mastix type R4 or RB to be placed into the formwork



BFL-Mastix type R4 or RB

Work or construction joint

Interface between two concreting stages where water could penetrate.

Choosing a profile type R4

Consult the Mastix catalogue over www.mastix.ch page 16

Choosing a profile type RB

Consult the Mastix catalogue over www.mastix.ch page 58

Placing of waterstops type R4 or RB

Consult the specifications sheets **056 and 057**

056 : waterstops placed in metallic formwork

057 : waterstops placed in wooden formwork

1. Description of waterstop type R4

BFL-Mastix waterstops type R4 are composed of a totally gravel covered core.

The core consists of a soft and waterproof rubber/bitumen elastomer material.

The fine gravel coating, covering the profile R4, is a rough and porous non alkali-reactive material of grain size 4/8 mm.

The fine gravel is mechanically tightly anchored on the core material.

2. Description of band type RB

BFL-Mastix waterstops type RB are similar to type R4, but wire-mesh reinforced, for increasing their rigidity, when placed in a formwork.



R4

RB

The Mastix system is simple to work with and naturally compatible with concrete and concrete structures

© mastix sa 2018 /JM/ 055 0718 Certified ISO 9001/2015

Mastix system : specifications sheet

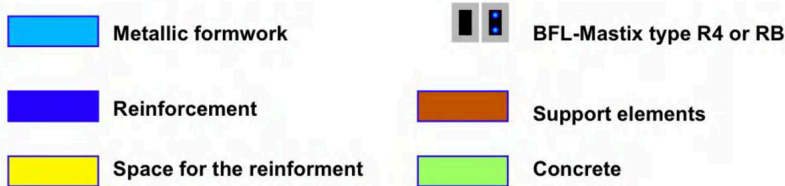
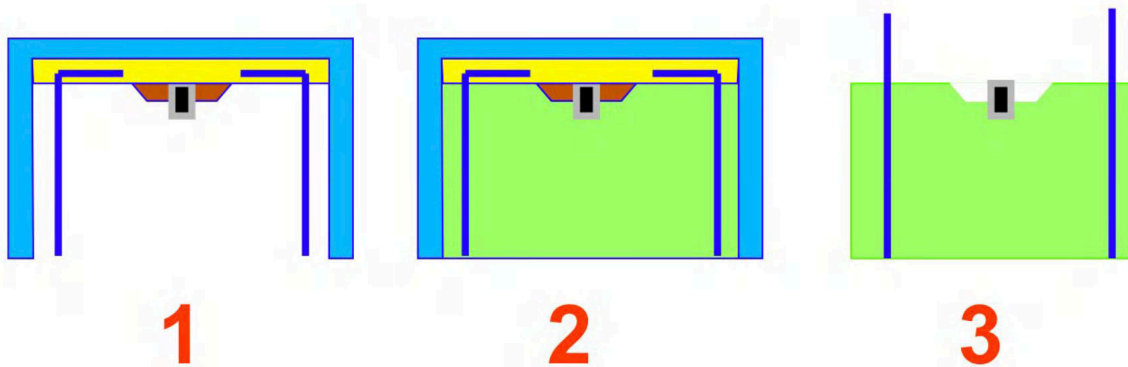
Waterproofing of work joints

056

Wall/Wall

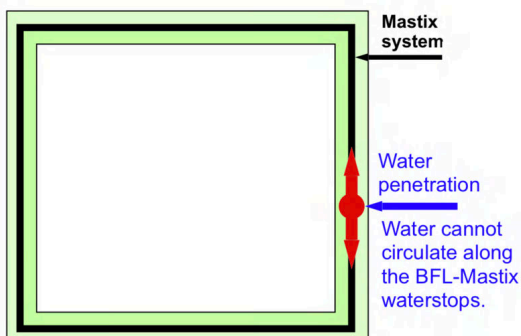
Waterstops BFL-Mastix type R4 or RB

waterstops placed in metallic formwork



1. BFL-Mastix waterstops avoid water infiltration in the joints.

BFL-Mastix waterstops avoid all water infiltration through the joints along the bands, through their permanent tight connection between the gravel coating and the fresh concrete.



BFL-Mastix waterstops have been successfully used for repairs in AAR-damaged constructions and in new structures, to avoid from the very beginning any water infiltration through the joints.

Consequences of water infiltration in concrete structures are damaged concrete (cohesion, resistance, properties) and corrosion of steel reinforcements.

Fresh concrete adheres exclusively on rough, clean and porous materials. It is an absolute requirement that the surface of an old concrete getting in contact with a fresh one, has the ability to absorb its humidity, so that the fresh cement paste can firmly adhere on the old surface.

BFL-Mastix waterstops have a mineral rough and porous surface, assuring a permanent waterproof connection with the concrete.

The Mastix system is simple to work with and naturally compatible with concrete and concrete structures

© mastix sa 2018 /JM/ 056 0718 Certifield ISO 9001/2015

Mastix system : specifications sheet

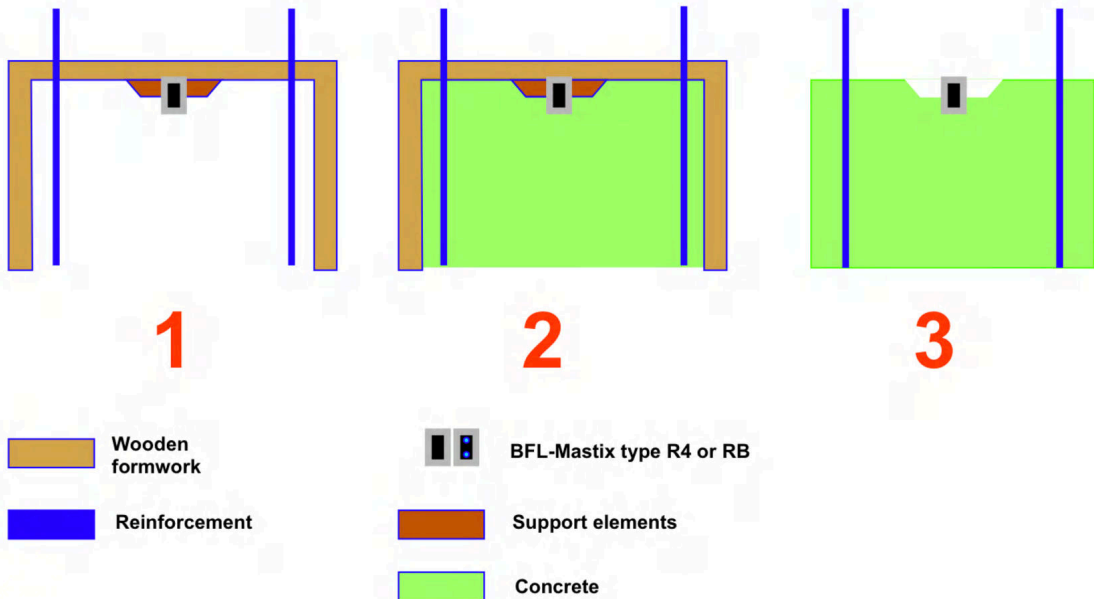
Waterproofing of work joints

057

Wall/Wall

Waterstops BFL-Mastix type R4 or RB

waterstops placed in wooden formwork



1 Water is always present...

Water can penetrate drop by drop in any concrete structure, thus endangering its durability.

Joints are the favorite point for water infiltration, offering the lowest resistance and effort to circulate into the structure.

The treatment of the joints has the task to avoid any water infiltration into the structure.

The requirements for waterproofing waterstops are :

- to avoid any water infiltration into the structure
- to offer to fresh concrete a contact surface that is granulated, rough, porous and clean.



The Mastix system is simple to work with and naturally compatible with concrete and concrete structures

© mastix sa 2018 /JM/ 057 0718 Certifiend ISO 9001/2015